

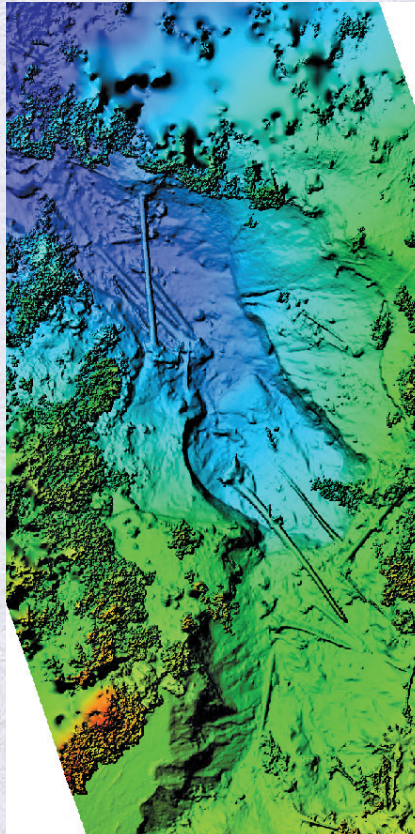
Civil/Public Works Services

“We Lay the Groundwork for Success”

Overview

Condor’s experienced team of Registered Engineers, Geotechnical Engineers, Certified Engineering Geologists and Hydrogeologists provide a broad range of services to government, industrial, agricultural and commercial clients. Condor’s Civil/Public Works experience includes Water Resources, Transportation, Geo-Structures, infrastructure condition evaluation and Asset Management with expertise in UAV and GIS support services.

For over three decades, Condor’s licensed professional have been providing services to local governments, utility providers, irrigation districts, industrial and agricultural clients for the design, construction, maintenance and rehabilitation of private and public works infrastructure.



Condor provides professional services to the following sectors:

Public Agency

- Public Works Infrastructure Design, Assessment and Construction Support
 - o Roads and Bridges
 - o Site Development
 - o Grading and Drainage
 - o Utilities, water distribution, wastewater collection, storm water infrastructure
- Asset Condition: Data Collection, Management and Master Planning
- Staff Augmentation
 - o Engineering Support
 - o Project Inspector Services
 - o Construction Management and Owner’s Representative
- Storm Water Design and Inspection/Monitoring
- Emergency Response and Recovery

Continued on side two...



CONDOR EARTH
An Employee Owned Company

Sonora • Stockton • Merced • Rancho Cordova California • 800.800.0490
website: www.condorearth.com • e-mail: info@condorearth.com

CONDOR • Civil/Public Works Services

Continued from side one...

Water Resources

- Dam Inundation Mapping and Emergency Action Plans
- Dam and Spillway Assessment and Rehabilitation
- Canal Assessment and Rehabilitation
- Bioengineered creek channel and bank restoration, stabilization and environmental enhancement
- Flood Control, Flood Damage Protection and Flood Damage Recovery
- Storm Water BMPs, Erosion Control Design, storm water treatment and implementation
- Storm Water Retention, Detention, Treatment and Infiltration

Environmental Support and Mitigation

- NEPA/CEQA exhibit preparation
- Resource Agencies Permit engineering support (401, 404, 1600)
- Construction Mitigation and Monitoring
- Permanent Environmental Improvements, Mitigation Design and Construction Support

Industrial and Agricultural Services

- Well design and installation
- Waste water treatment/Waste Discharge Permit compliance
- Industrial stormwater compliance
- Civil/Site design for industrial/agricultural processes
- Erosion/Sediment Control, SWPPP Design and Construction services

SUPPORT SERVICES:

Geotechnical

- Geotechnical Investigations
- Retaining Wall Design including Soil Nail and Tie-Back Design
- Geosynthetic Liner Design
- Slope Stabilization Design and Construction Engineering

GIS, Asset Collection and Data Management

- Remote Sensing Data Collection (UAV, Subsurface, Bathymetry, Pipes)
- Public Works Asset Collection and Asset Management
- GIS Analysis, Modeling and Mapping Services
- Exhibits and Automation
- Digital Surface Modeling

Materials Testing and Special Inspection

- Earthwork and Grading (QA/QC)
- DSA Field and Laboratory Testing
- C/IBC Special Inspection
- AWS Welding Inspection
- Construction Quality Assurance/Quality Control (QA/QC)



CONDOR EARTH

An Employee Owned Company

Sonora • Stockton • Merced • Rancho Cordova California • 800.800.0490

website: www.condorearth.com • e-mail: info@condorearth.com