

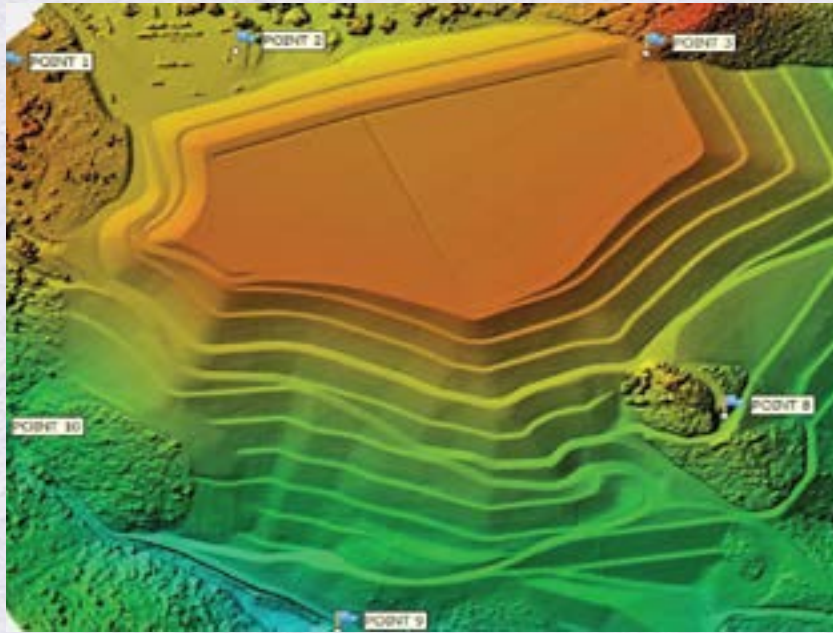
Unmanned Aerial Systems

"We Lay the Groundwork for Success"

DRONE MAPPING AND ANALYSIS

Overview

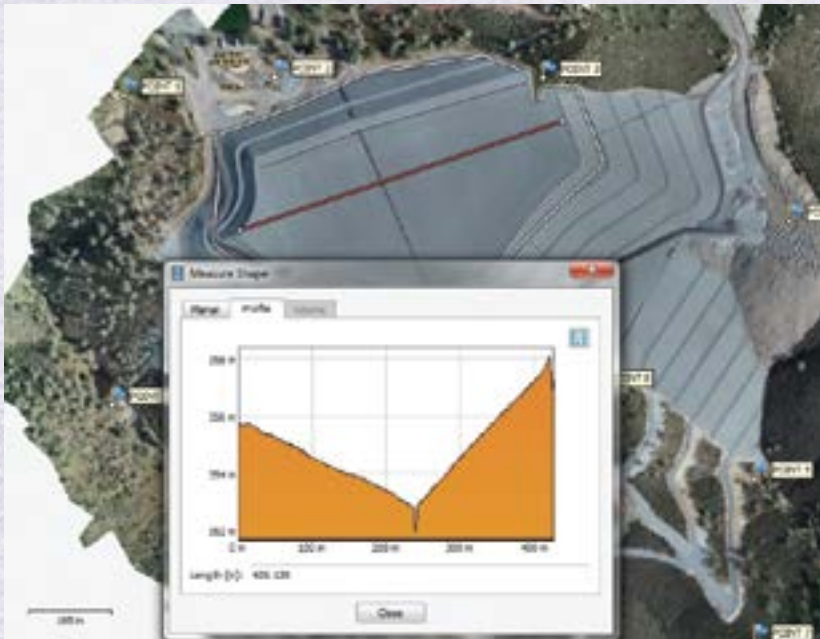
Condor is utilizing Unmanned Aerial Systems (UAS), more commonly known as drones, to perform a variety of data collection and analysis projects. Condor uses UAS to capture high-resolution imagery with processing techniques to render real-life visualization tools for planners, engineers, and construction teams. These models of infrastructure, landscapes, and geologic features produce high-resolution design tools that accurately depict terrain and relative elevations. This data is produced in a significantly shorter timeframe than traditional methods, which translates to decreased acquisition costs.



Condor's UAS projects are facilitated by a federally licensed and insured UAS pilot.

These capabilities allow Condor to provide:

- High-resolution aerial imagery
- Time-lapse aerial imagery
- Aerial video inspections
- Digital elevation models (DEMs)*
- Scaled 3D-models and other products for analysis
- Rapid response to client needs
- Data collection for asset management and condition assessment



CONDOR EARTH

An Employee Owned Company

e-mail: info@condorearth.com • 800.800.0490

website: www.condorearth.com

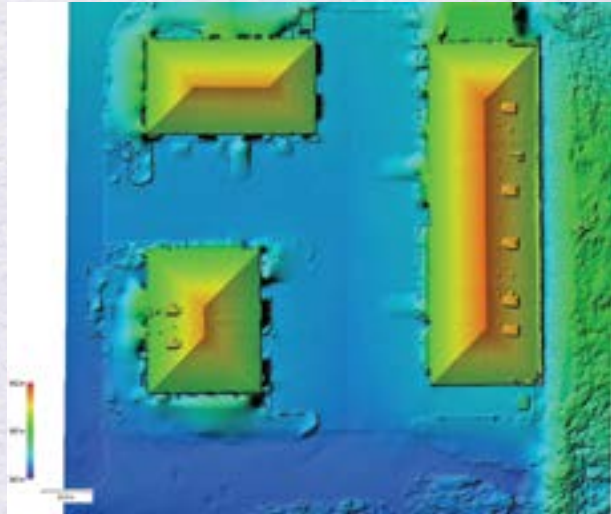
CONDOR • Unmanned Aerial Systems

Continued from side one...

*Condor's broad base of experience and expertise allows us to utilize UAS data collection with Geographic Information Systems (GIS) data analytics. High accuracy and high resolution DEMs allow us to analyze geospatial data at a cutting-edge scale and frequency.

Examples of how UAS DEMs can be used include:

- Developing contour maps for planning and analysis
- Delineating watersheds from regional scale down to a facility scale
- Slope and Slope Direction analysis
- Measuring volume of stockpiles, ponds, tanks, landslides and other features



As an ESRI Business Partner, Condor is part of a rich networked ecosystem of organizations that work together to amplify the leading edge of GIS capabilities. This means we can distribute and provide custom geospatial solutions, content, and services to suit client needs by utilizing ESRI's suite of integrated geospatial technologies and applications.

For additional information on our Unmanned Aerial Systems, please contact:

**Jeremiah Wilson,
UAS Specialist**

Direct: (209) 588-6298

Email:

jwilson@condorearth.com



CONDOR EARTH

An Employee Owned Company

e-mail: info@condorearth.com • 800.800.0490

website: www.condorearth.com