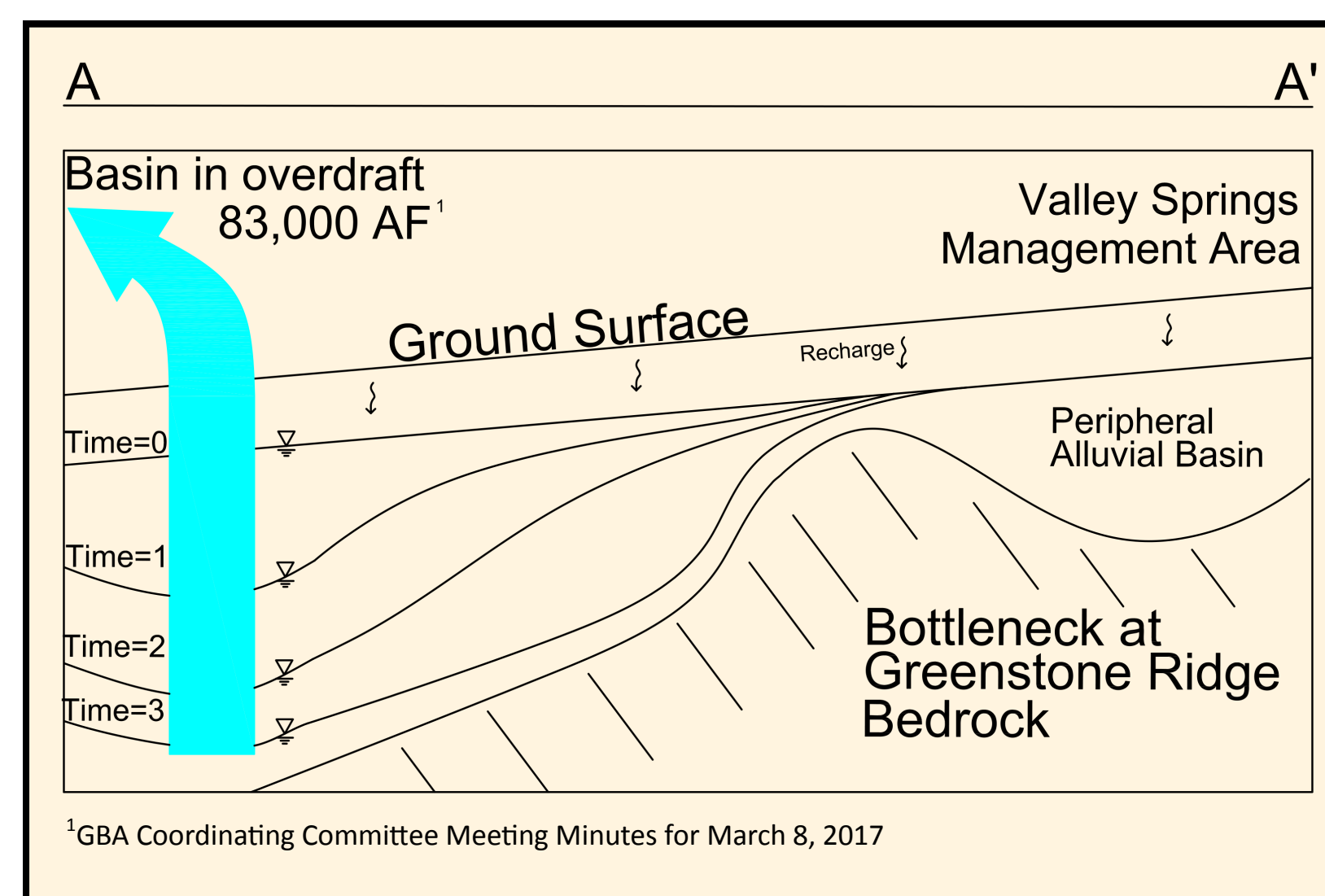
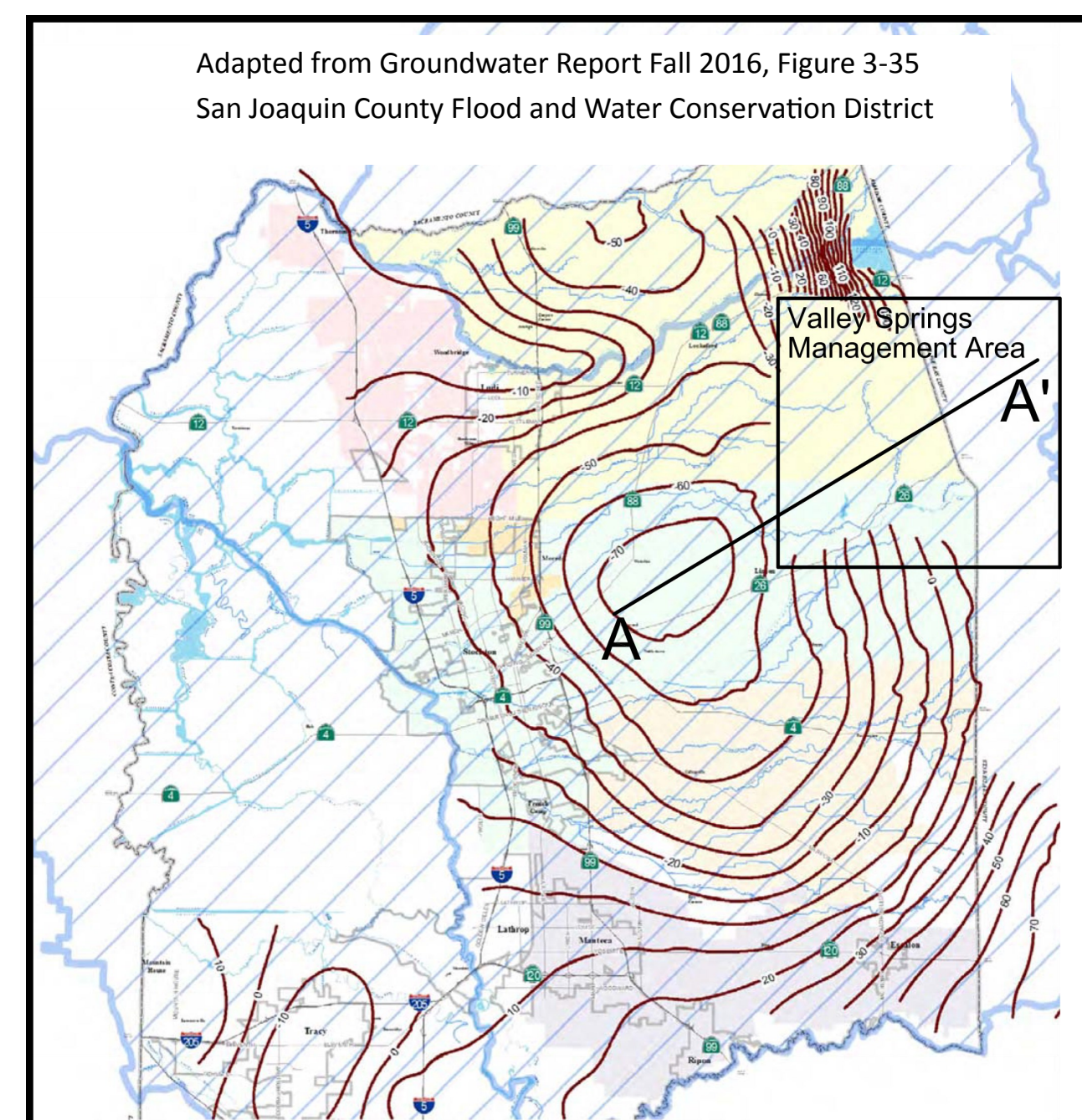
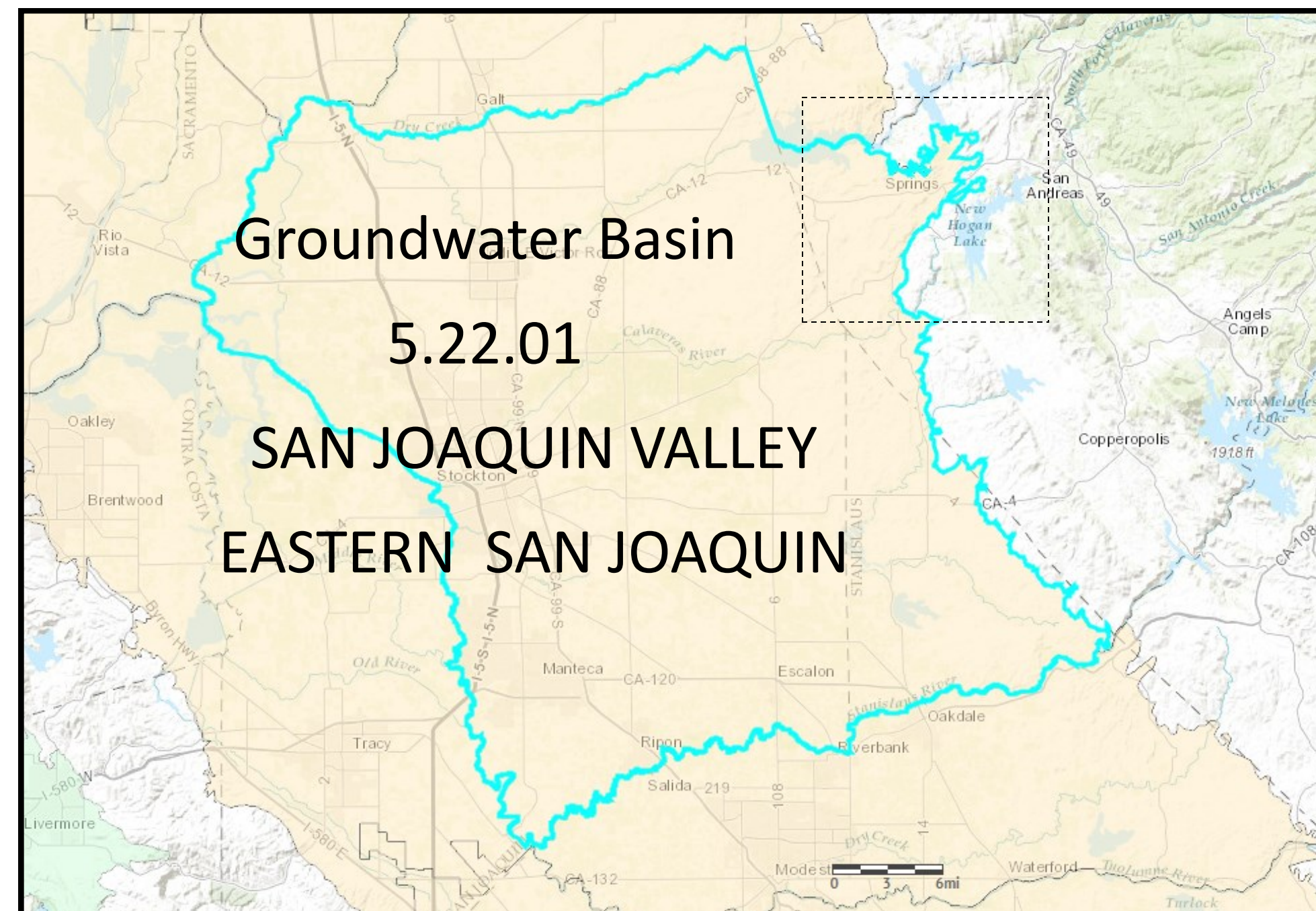


Management Areas within Groundwater Basins and Hydrogeologic Conceptual Models

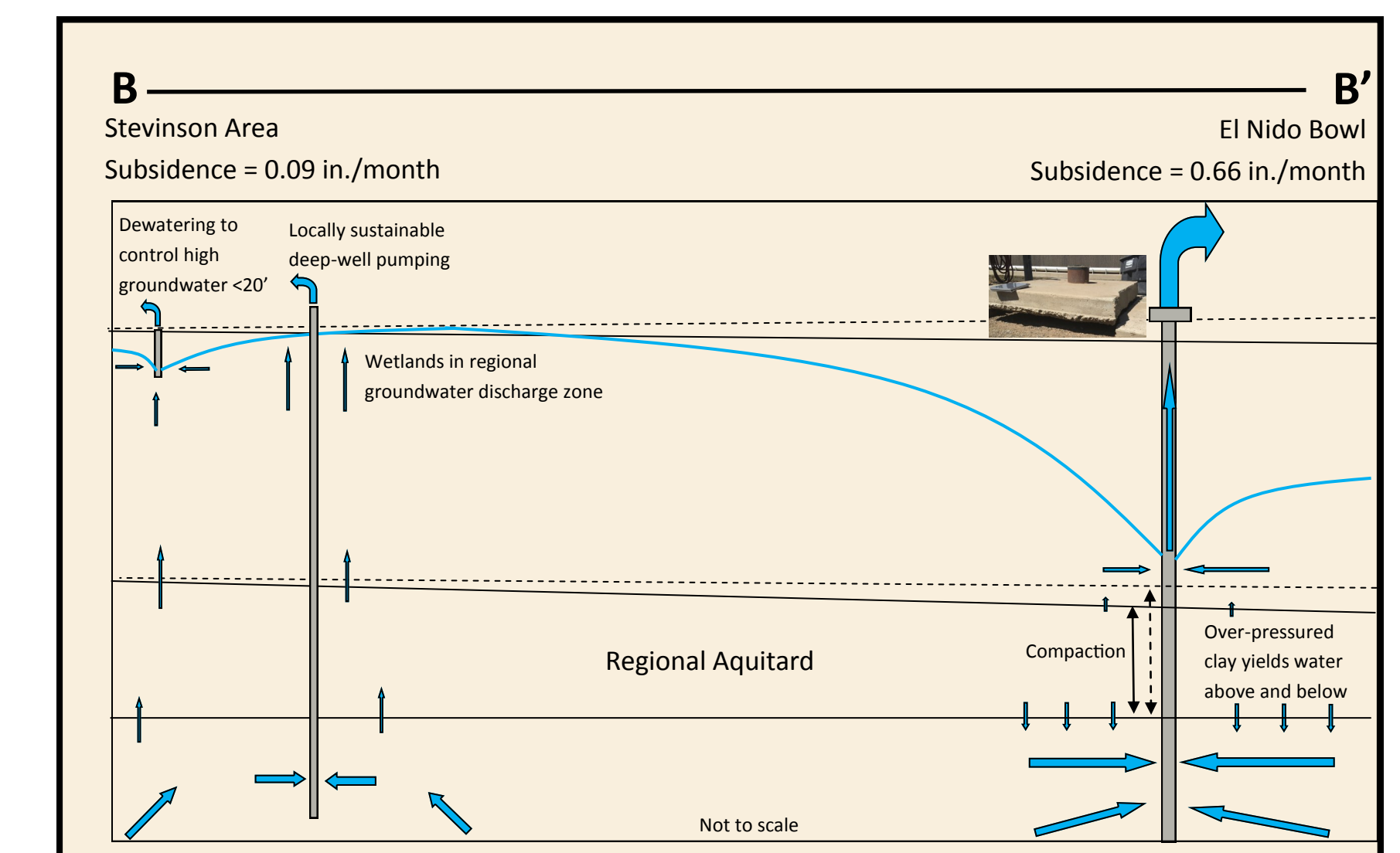
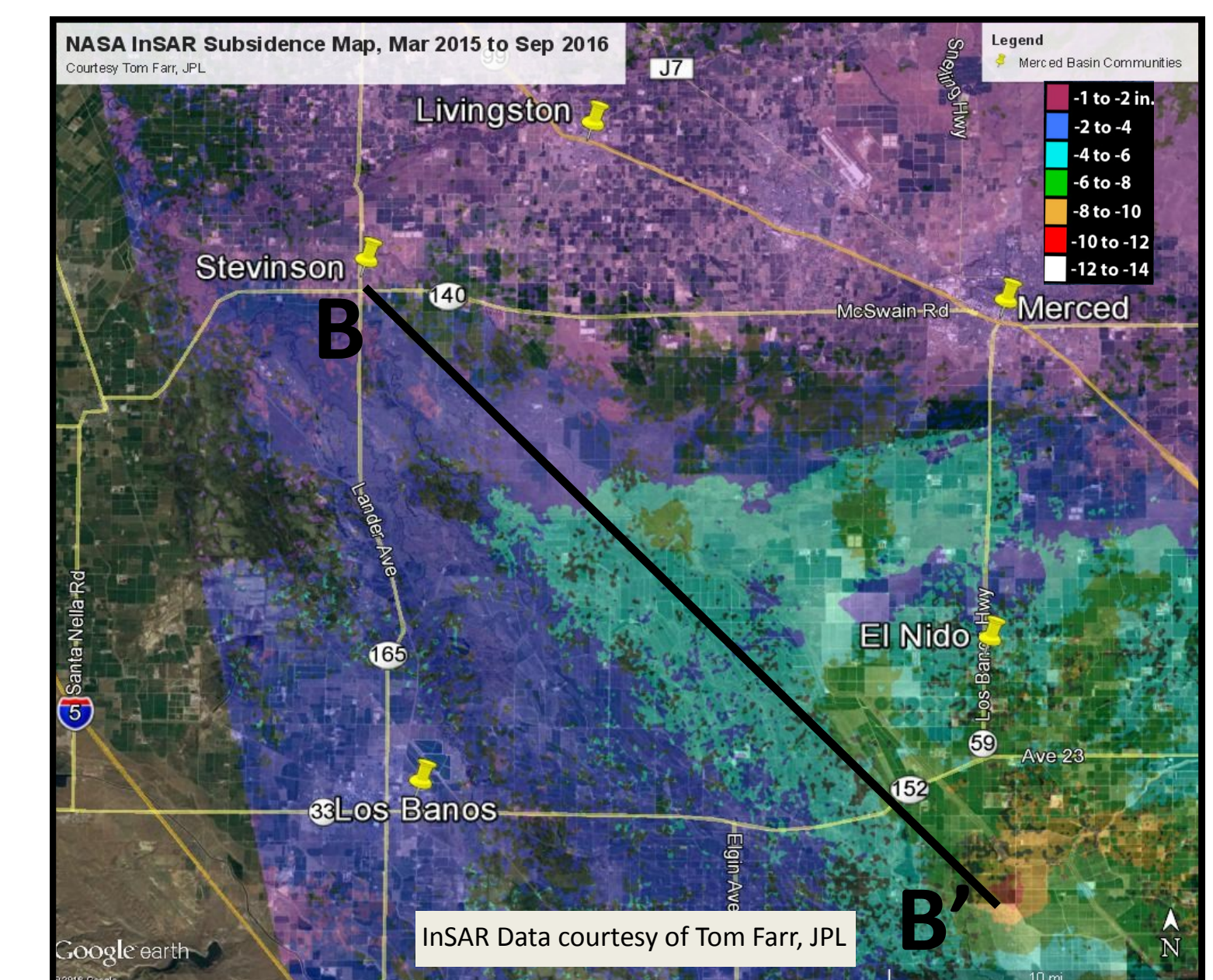
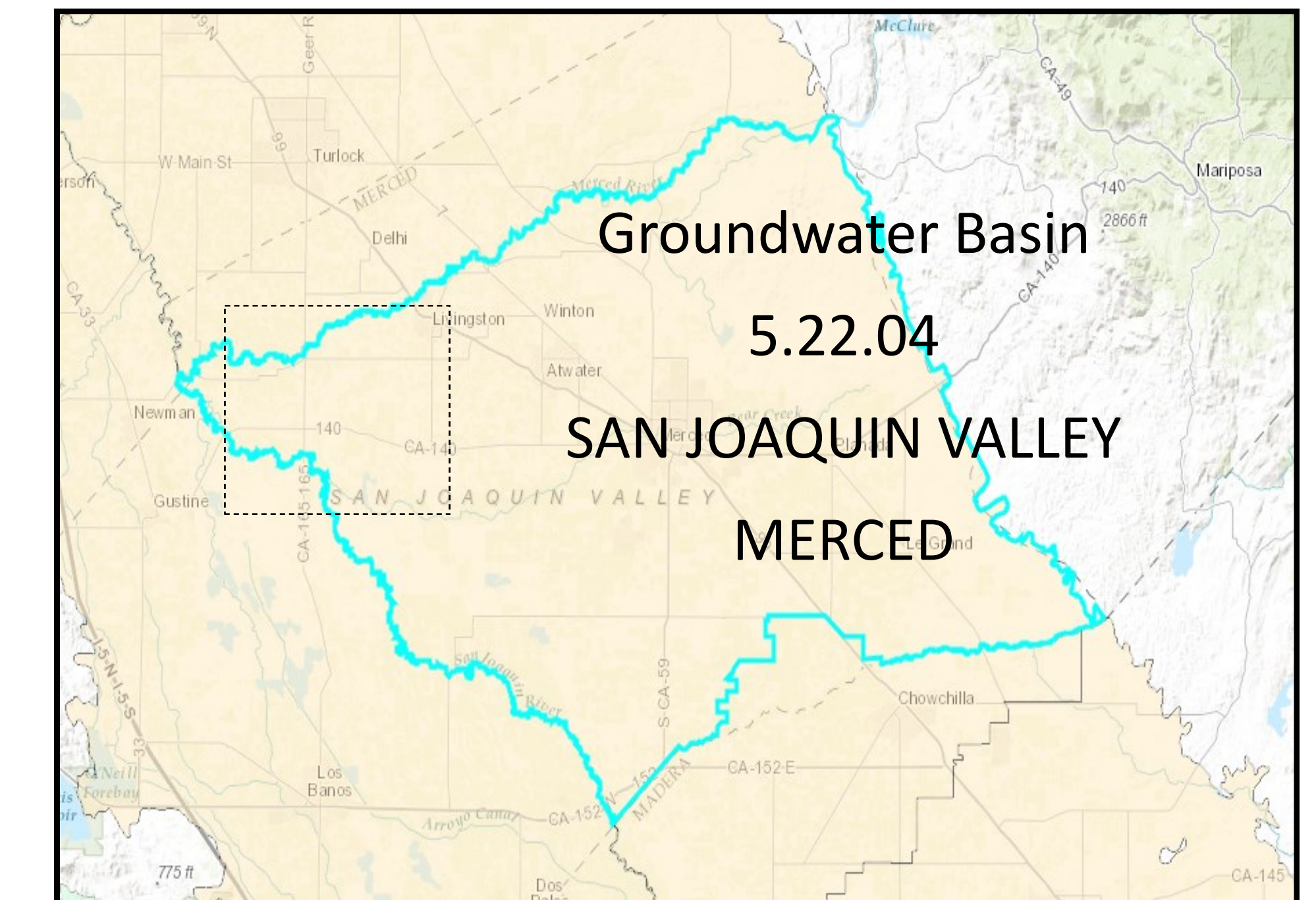
Case #1

Chronic Low Groundwater
Geologic bottlenecks protect
peripheral areas from basin
overdraft.



Case #2

Land Subsidence
Aquifers above and below
aquitards can be managed
differently.



Casey Kipf, P.G., CHG. No. 1011, Senior Hydrogeologist, Condor Earth
John Lane, P.G., Environmental Services Manager, Condor Earth
Luke Castle, P.G., Associate Geologist, Condor Earth

Management Areas are hydrogeologically distinct sub-areas with definable boundaries and hydraulic properties. The Sustainable Groundwater Management Act (SGMA) allows agencies to manage these areas with different “minimum thresholds” and “measurable objectives” than the larger basin. **Management Areas are a flexible management tool for local stakeholders.**

Hydrogeologic Conceptual Models frame our understanding of groundwater occurrence and flow. Two cases are presented to illustrate how they can guide management decisions. Case #1 shows how geologic features that cause hydraulic bottlenecks will protect peripheral areas from chronic low groundwater in overdrafted basins. Case #2 illustrates how aquifer layers above and below significant aquitards can be managed differently.

These cases cover only two of the six undesirable results listed in SGMA. All six can be analyzed with conceptual hydrogeologic models to find boundaries of local importance. **Groundwater users in Management Areas can establish different minimum thresholds and measurable objectives than the larger basin planning area as a whole.**